



Engineering Technical Bulletin – LokSeam 18” – 24 Ga.

Not For Use in Florida

This Technical Bulletin is only a sales tool to see if this panel will work based on structures having the characteristics listed below. For Structures falling outside the parameters, please contact ABC for appropriate fastener spacing. The structure being evaluated still needs to be designed by a Professional Engineer.

Building Code: ASCE 7-10
 Mean Roof Height <= 30'
 Gable/Hipped Roofs with Slope 7 to 25 Degrees
 Minimum 3-span condition
 Factor of Safety (connection) = 3.00

Exposure: B
 Enclosed Structures
 Building Category II
 Substrate: 7/16" OSB
 Fastener Pullout based on Atlas or Buildex #10-12 Pancake Type A

Gable Roof with 0.6D+0.6W

| Basic Wind Speed (mph) | 115 | 120 | 125 | 130 | 135 | 140 | 145 | 150 |
|--|--------|--------|--------|--------|--------|--------|--------|--------|
| (1) Main Pressure (psf) | -12.21 | -13.37 | -14.58 | -15.83 | -17.14 | -18.50 | -19.91 | -21.36 |
| (2) Eave, Rake, and Ridge Pressure (psf) | -21.88 | -23.90 | -26.00 | -28.19 | -30.47 | -32.83 | -35.28 | -37.81 |
| (3) Corner Pressure (psf) | -32.75 | -35.74 | -38.85 | -42.09 | -45.46 | -48.95 | -52.57 | -56.32 |

Gable Roof Fastener Spacing (ft)

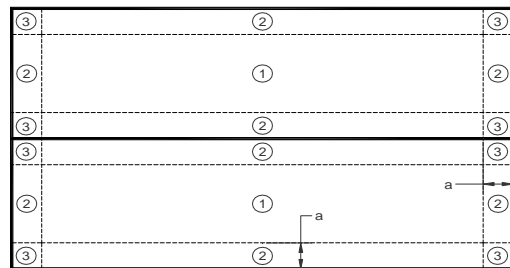
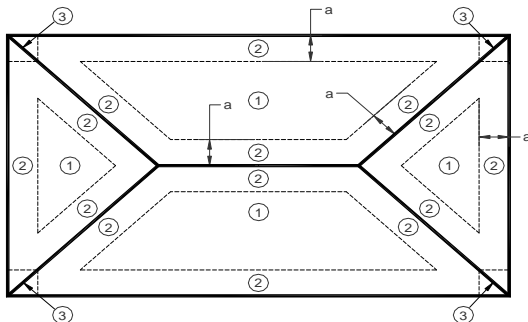
| | | | | | | | | |
|---|------|------|------|------|------|------|------|------|
| (1) Main Pressure (ft) | 3.75 | 3.25 | 3.00 | 2.75 | 2.50 | 2.25 | 2.25 | 2.00 |
| (2) Eave, Rake, and Ridge Pressure (ft) | 2.00 | 1.75 | 1.75 | 1.50 | 1.50 | 1.25 | 1.25 | 1.00 |
| (3) Corner Pressure (ft) | 1.25 | 1.25 | 1.00 | 1.00 | 1.00 | 0.75 | 0.75 | 0.75 |

Hipped Roof with 0.6D+0.6W

| Basic Wind Speed (mph) | 115 | 120 | 125 | 130 | 135 | 140 | 145 | 150 |
|--|--------|--------|--------|--------|--------|--------|--------|--------|
| (1) Main Pressure (psf) | -12.21 | -13.37 | -14.58 | -15.83 | -17.14 | -18.50 | -19.91 | -21.36 |
| (2) Eave, Rake, and Ridge Pressure (psf) | -21.88 | -23.90 | -26.00 | -28.19 | -30.47 | -32.83 | -35.28 | -37.81 |
| (3) Corner Pressure (psf) | -21.88 | -23.90 | -26.00 | -28.19 | -30.47 | -32.83 | -35.28 | -37.81 |

Hipped Roof Fastener Spacing

| | | | | | | | | |
|---|------|------|------|------|------|------|------|------|
| (1) Main Pressure (ft) | 3.75 | 3.25 | 3.00 | 2.75 | 2.50 | 2.25 | 2.25 | 2.00 |
| (2) Eave, Rake, and Ridge Pressure (ft) | 2.00 | 1.75 | 1.75 | 1.50 | 1.50 | 1.25 | 1.25 | 1.00 |
| (3) Corner Pressure (ft) | 2.00 | 1.75 | 1.75 | 1.50 | 1.50 | 1.25 | 1.25 | 1.00 |



a = edge zone dimension = 10% of least horizontal dimension or 0.40h, whichever is smaller, but not less than either 4% of least dimension or 3 ft.